



Urgent Care

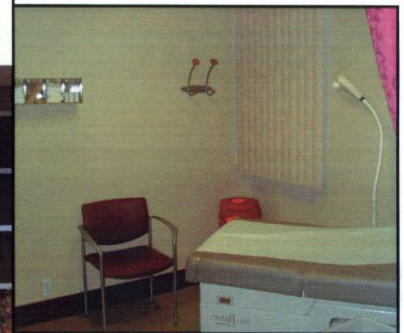
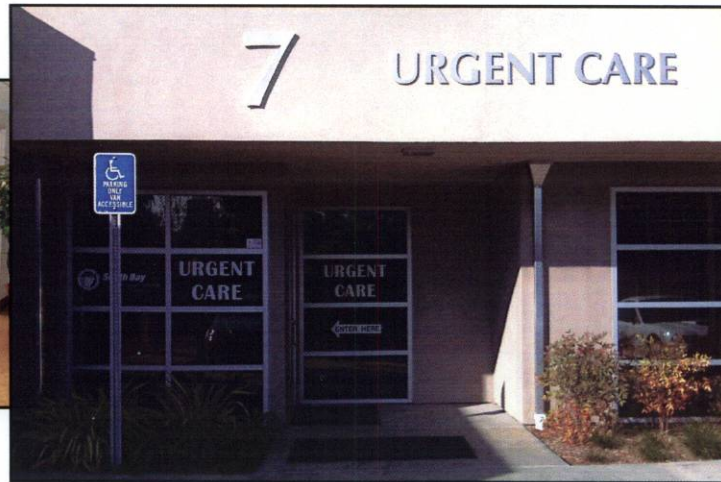
South Bay Family Health & Urgent Care Center

A Division of San Ysidro Health Center Inc.

340 4th Avenue, Suite 7
Chula Vista, CA 91910
(Located in Chula Vista Doctors Park)

HOURS
Monday - Friday: 10 am to 8 pm
Saturday: 10 am to 6 pm

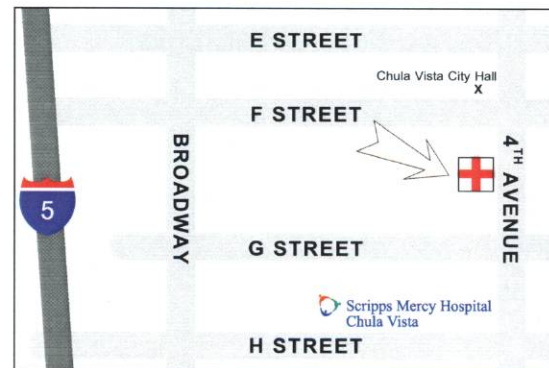
URGENT MEDICAL CARE AT YOUR CONVENIENCE



SERVICES OFFERED

- Common non-life threatening illnesses
- Minor cuts and burns
- Sprains, strains and simple fractures
- Colds and sore throat
- Urinary Tract Infections
- Nausea and vomiting
- Sinus or ear infections
- Allergies
- Abdominal pain
- Fever
- "Just don't feel good" conditions
- Help with finding a primary care doctor

Patients of all ages welcomed!



We accept Medi-Cal, Healthy Families, and many private health insurance plans. We also offer discounted health care services through our "sliding fee" program for patients that qualify.

NO APPOINTMENT NEEDED!

619-662-4100

South Bay Family Health & Urgent Care Center, a Division of San Ysidro Health Center, Inc.



Urgent Care

South Bay Family Health & Urgent Care Center

A Division of San Ysidro Health Center Inc.

340 4th Avenue, Suite 7

Chula Vista, CA 91910

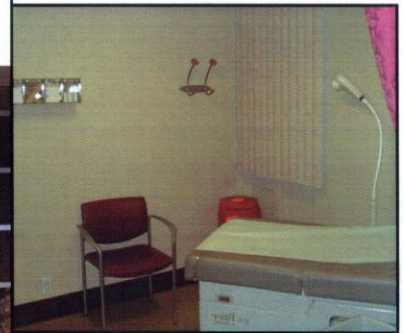
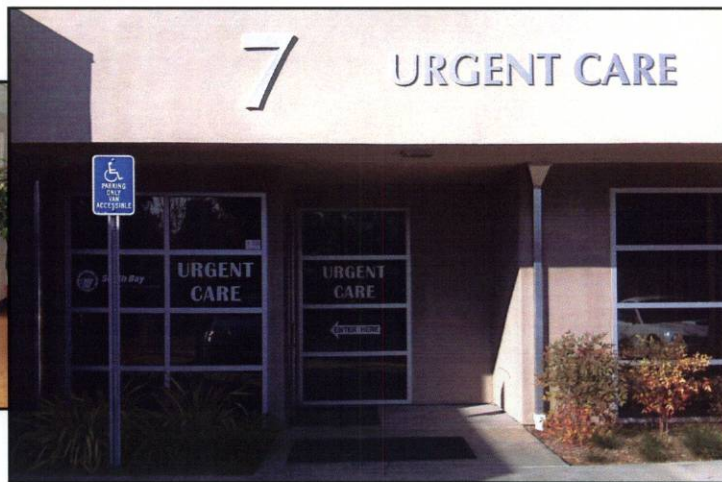
(Localizado en Chula Vista Doctors Park)

HORARIO

Lunes - Viernes: 10 am a 8 pm

Sábado: 10 am a 6 pm

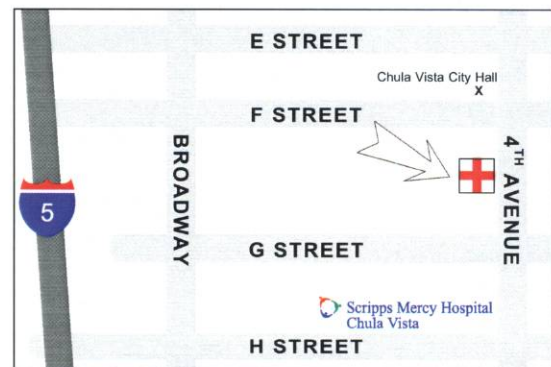
CUIDADO MÉDICO URGENTE A SU CONVENIENCIA



SERVICIOS DISPONIBLES

- Enfermedades comunes, no-amenazantes de vida
- Cortaduras y quemaduras pequeñas
- Torceduras y fracturas sencillas
- Resfriados y dolor de garganta
- Infecciones urinarias
- Náusea y vómitos
- Infecciones del oído o nariz
- Alergias
- Dolor abdominal
- Fiebre
- "Simplemente no me siento bien"
- Ayuda para encontrar un médico primario

¡Pacientes de todas edades bienvenidos!



Aceptamos Medi-Cal, Healthy Families, y la mayoría de seguros médicos. Además ofrecemos un "Programa de Descuento" en los servicios de salud para los pacientes que califiquen.

¡NO SE REQUIERE CITA!

619-662-4100

South Bay Family Health & Urgent Care Center, una División de San Ysidro Health Center, Inc.

URGENT CARE

Our goal is to provide you with an excellent health care experience. We would like to share some of our "urgent care" guidelines with you and your family to keep you well informed:

- **Patients are generally seen in the order they arrive; however, patients with urgent conditions will receive priority.**
- We make every effort to minimize waiting times and keep you informed of delays.
- For the safety of your children, please do not leave them unattended at any time.
- Please do not have food or beverages while in the waiting area.
- Please turn off cellular telephones prior to entering the triage or treatment areas. Providers will insist that you do not use cell phones during your visit so they may provide you with their undivided attention and ensure your health care needs are addressed quickly and accurately.
- Patients arriving after 7:30pm Mon-Fri or 5:30pm on Saturday with problems requiring extensive evaluation or testing may/will be referred to the nearest hospital Emergency Department if in the provider's judgment insufficient time remains to adequately complete the evaluation prior to closing.
- If we have failed to meet your expectations, please let us know before you leave so we may address your concern.

CUIDADO URGENTE

Queremos proveerle cuidado medico excelente. Nos gustaría compartir algunas de nuestras directrices con usted y su familia para que estén bien informados:

- **Pacientes generalmente son vistos en la orden en que llegaron. Sin embargo, pacientes con condiciones urgentes recibirán prioridad.**
- Tratamos de minimizar su tiempo de espera y dejarle saber si hay retrasos.
- Para la seguridad de sus hijos, favor de no dejarlos sin vigilancia en ningún momento.
- Favor de no comer ni beber en la sala de espera.
- Favor de apagar su teléfono celular antes de entrar a la clínica o la zona de tratamiento. Proveedores insistirán que no use su teléfono celular durante su visita para poder proveerle nuestra completa atención y asegurarnos de que sus necesidades médicas sean dirigidas rápidamente y correctamente.
- Pacientes que lleguen después de las 7:30pm de lunes a viernes y después de las 5:30pm sábados con problemas que requieren evaluación amplia o exámenes adicionales pueden ser/serán referidos al departamento de emergencia del hospital mas cercano si el doctor piensa que no hay bastante tiempo para completar una evaluación antes de que cerremos.
- Si no cumplimos con sus expectativas, por favor déjenos saber antes de irse para poder dirigir su preocupación.